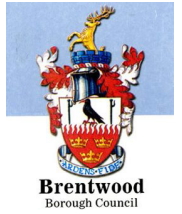


Case Study



Client: **Brentwood Council**
Contract: **TCP 2005**

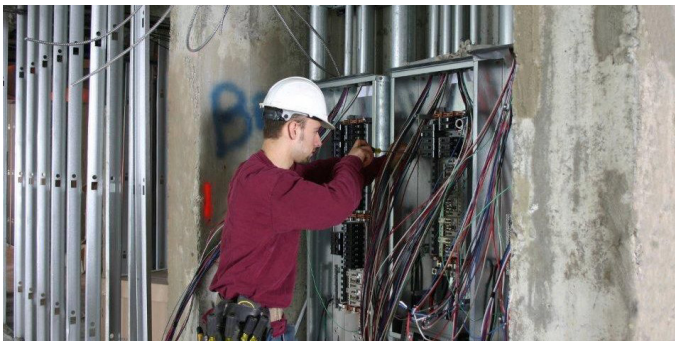
Value: **£10 million**
Period : **2014-2024**

THE PROJECT

Oakray Ltd provides a comprehensive range of services to support Brentwood Borough Council in the maintenance and improvement of its housing and community facilities. Planned project works include rewires, commercial installations, plant rooms, remedial works and upgrades to mains and distributions systems. Fire alarm and door entry installations, along with installation and maintenance of CCTV and access control systems help to ensure safety and security. Planned preventative maintenance is also provided through electrical installation condition reporting, lighting protection inspections, monthly lighting checks, combined heat and power servicing, energy audits and thermal image surveys.

Brentwood Council's property portfolio includes:

- Council housing stock
- Distributed street properties
- Highrise and lowrise flats
- Care homes
- Multi-storey car parks
- Parks and gardens



DELIVERING THE SOLUTION

- Detailed planning, monitoring and reporting for compliance and planned maintenance
- Lighting Audits with ROI and CO2 Calculations
- Establishing relationships with local suppliers, minimising downtime and disruption
- Dedicated local engineers and provision of satellite office
- Joint surveys with the client

RESULTS

- High performing key performance results
- Reducing day to day repairs
- Reduction in energy usage and CO2
- Detailed compliance reporting
- Production of a detailed asset register
- True partnering results



**Designed.
Installed.
Managed.
Maintained.**

